

1-17-1992

## Campus News January 17, 1992

La Salle University

Follow this and additional works at: [http://digitalcommons.lasalle.edu/campus\\_news](http://digitalcommons.lasalle.edu/campus_news)

---

### Recommended Citation

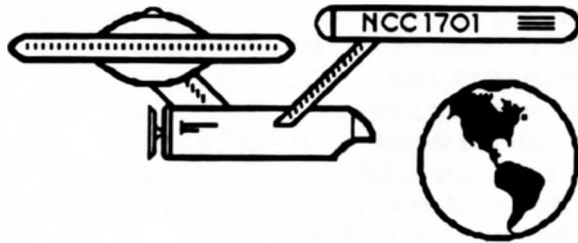
La Salle University, "Campus News January 17, 1992" (1992). *Campus News*. 414.  
[http://digitalcommons.lasalle.edu/campus\\_news/414](http://digitalcommons.lasalle.edu/campus_news/414)

This Book is brought to you for free and open access by the University Publications at La Salle University Digital Commons. It has been accepted for inclusion in Campus News by an authorized administrator of La Salle University Digital Commons. For more information, please contact [careyc@lasalle.edu](mailto:careyc@lasalle.edu).

# CAMPUS NEWS

**LA SALLE UNIVERSITY'S WEEKLY INFORMATION CIRCULAR**

**January 17, 1992**



**DON'T FORGET!!!**



Trek on down to Campus  
Ministry for Lunch....  
Tuesday, January 21  
11:30 AM 'til 2 PM  
(or until we run out of food).

*Campus News* is distributed weekly to foster communication and encourage information sharing among University departments. Articles submitted are the responsibility of their authors alone and do not imply an opinion on the part of La Salle University or the Department of Mail and Duplicating Services.



## LA SALLE UNIVERSITY

OFFICE OF THE PROVOST  
PHILADELPHIA, PA 19141 • (215) 951-1015 • FAX (215) 951-1785

---

January 13, 1992

TO: All Faculty

FROM: Joseph F. Burke, F.S.C., Provost

A variety of announcements of grant programs and scholarly opportunities have recently arrived in the mail, and I want to briefly note them for you here.

### NEH Research Conferences

The Division of Research Programs announces eighteen research conferences in 1991-93 that are being supported by the National Endowment for the Humanities. These conferences are designed to advance scholarly research in the humanities. Many but not all of the conferences award small travel subsidies for attendance on a competitive basis. In most cases observers are welcome. Those interested in additional information should call or write the conference directors. Proceedings of conferences that have already taken place can be obtained from the project directors.

The list of conferences with addresses of directors has been posted on the Provost Office bulletin board in the Union Building.

### NEH Summer Seminar for College Teachers on "Human Rights in Theory and Practice"

A brochure describing the seminar to be held at SUNY, Buffalo, from June 15 to August 5, 1992, is available in the Provost's Office.

### National Science Foundation Program Announcements

Two grant program announcements have been received from NSF. Both are for development and implementation of programs rather than applications for participation.

The programs are Undergraduate Faculty Enhancement Program, aimed at improvement of undergraduate teaching in science, engineering and mathematics; and Human Resource Development for Minorities in Science and Engineering, for programs designed to improve recruitment, enrollment, and retention of minority students in science, engineering, and mathematics at both pre-college and college levels.

Program announcements and guidelines for both of these programs are available for review in the Provost's Office.

TO: University faculty and staff

FROM: Alcohol and Other Drug Program

DATE: 17 Jan 92

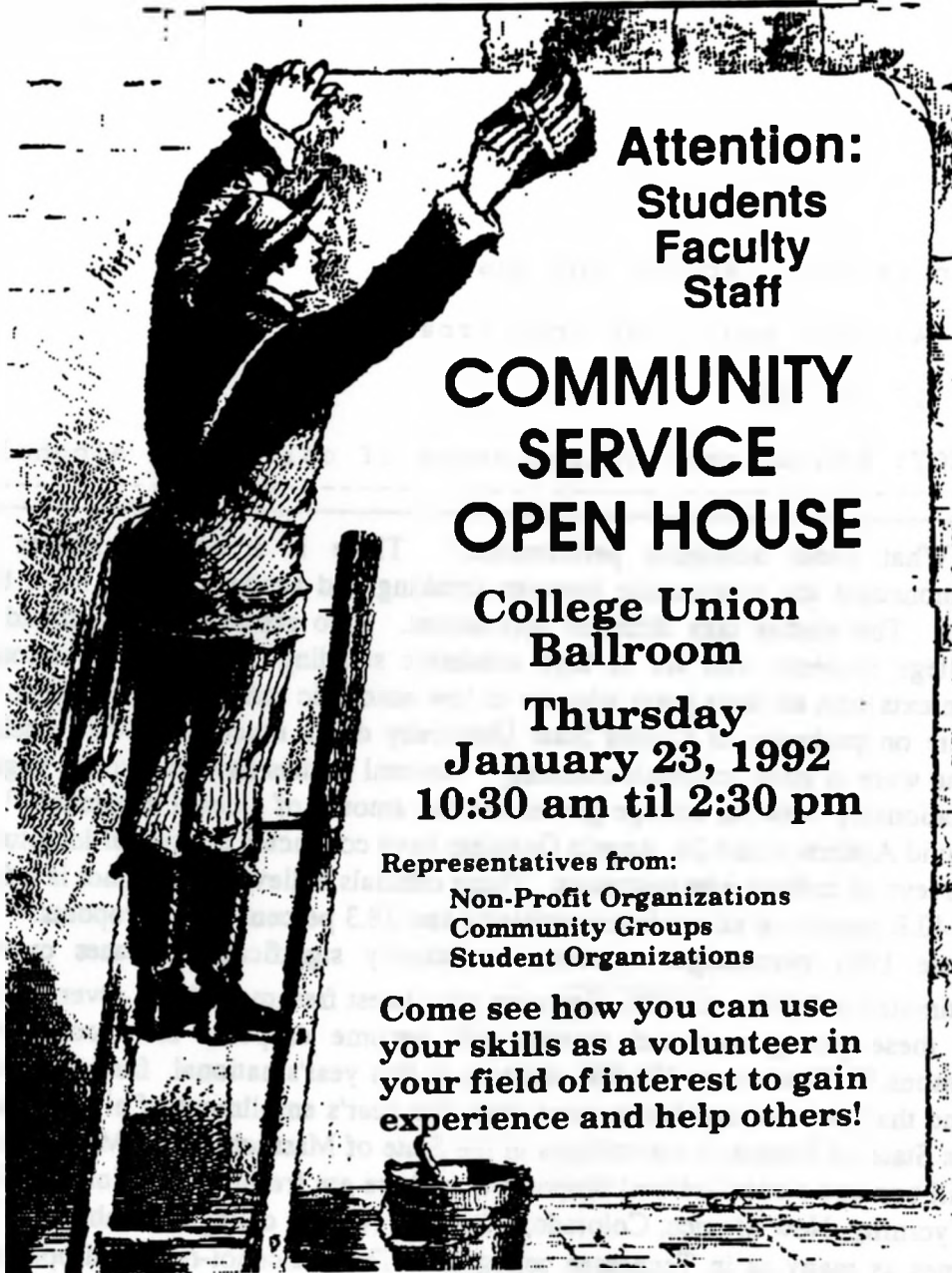
SUBJECT: Educational consequences of collegiate alcohol abuse  
-----

What about academic performance? There is a host of studies that demonstrate the relationship between drinking and academics, and it's a bleak one. The studies take different approaches. Two separate studies found that college students who are in high academic standing drink less in almost all contexts than do their peers who are in low academic standing.<sup>79</sup> Freshmen who were on probation at Kansas State University drank much more than freshmen who were in good academic standing.<sup>80</sup> Several studies have shown the negative relationship between college grades and the amount of alcohol consumed.<sup>81</sup> Dr. David Anderson and Dr. Angelo Gadaletto have conducted a series of longitudinal surveys of college administrators. These officials believe that alcohol is a factor in 40.8 percent of all academic problems and 28.3 percent of the dropouts.<sup>82</sup> And these 1991 percentages represent statistically significant increases over the estimates of 1985 and 1988. Examine your latest freshman class. Over 7 percent of these young men and women will become dropouts for alcohol-related reasons.<sup>83</sup> That's over 120,000 students of this year's national freshman class.<sup>84</sup> And that national number is more than this year's enrollment of all freshmen in the State of Illinois or the colleges in the State of Massachusetts. More freshmen will become alcohol-related dropouts than there are freshmen in Montana, Idaho, Wyoming, New Mexico, Colorado, Utah, and Nevada colleges combined. Three times as many as in Tennessee colleges.<sup>85</sup> Those alcohol-related dropouts will not earn what their graduating counterparts will, and the loss in lifetime earnings will be about \$33 billion for this year's freshman class.<sup>86</sup> That's more than the annual contribution to our gross national product of all the hotels and motels in America.<sup>87</sup> There will be defaulted student loans, and unreachd potentials and aspirations. And this year's freshman class will pay \$3.1 billion less over their lifetime in taxes alone<sup>88</sup> than they would have if there were no alcohol-related dropouts. That \$3.1 billion in annual lost tax revenue is more than the Federal outlay for all the guaranteed student loans in the nation.<sup>89</sup> And the same will happen next year, and the year after that, until there is a profound change on our campuses.

Taken from: Alcohol Practices, Policies and Potentials of American colleges and universities.

Cited references available upon request.

A slide presentation regarding this white paper is available. Contact Robert Chapman, extension 1355 for details.



**Attention:  
Students  
Faculty  
Staff**

**COMMUNITY  
SERVICE  
OPEN HOUSE**

**College Union  
Ballroom**

**Thursday  
January 23, 1992  
10:30 am til 2:30 pm**

**Representatives from:**

**Non-Profit Organizations  
Community Groups  
Student Organizations**

**Come see how you can use  
your skills as a volunteer in  
your field of interest to gain  
experience and help others!**

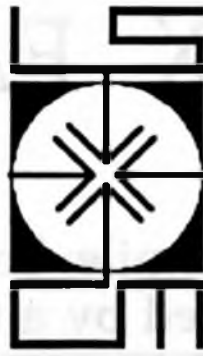
**TO: ALL FACULTY AND STAFF  
FROM: ROSEMARY BARBERA, MILLIE CARVALHO & KAREN SIMMONS  
DATE: 17 JANUARY, 1992**

**RE: COMMUNITY SERVICE OPEN HOUSE**

**PLEASE FEEL WELCOME TO ATTEND THE COMMUNITY SERVICE OPEN HOUSE WHICH IS ADVERTISED ABOVE. OVER 30 ORGANIZATIONS FROM AROUND THE PHILADELPHIA AREA WILL BE REPRESENTED.**

**ALSO, PLEASE ENCOURAGE THE STUDENTS WITH WHOM YOU HAVE CONTACT TO ATTEND AND EXPLORE THEIR POSSIBILITIES OF PARTICIPATING IN COMMUNITY SERVICE AND VOLUNTEERING.**

**THANKS FOR YOUR ATTENTION TO THIS MATTER!**



**Sunday  
January 19th  
Liturgy will be  
celebrated  
at 6:30 pm  
ONLY.**



# FAX FACTS

FAX - Short for facsimile; best thought of as two copiers connected by a telephone line.

---

## TO SEND A FAX

FAX cover sheets are available at the Customer Service Counter of Mail and Duplicating Services and should be properly completed by the sender. Departmental Budget information and the FAX number of the recipient are required to complete the cover sheet.

## TO RECEIVE A FAX

FAX messages received are logged-in at the Department of Mail and Duplicating Services and immediately placed in the mailbox of the recipient. It is important to request that the sender include your name and mailbox number on incoming FAX transmissions.

## FAX NUMBER

Our University FAX number is 951-1488. Persons on campus who wish to receive a FAX are responsible to relay the FAX number to the sender.

---

# 951-1488

Department of Mail and Duplicating Services



CONNELLY LIBRARY

**LIBRARY HOURS**

**SPRING SEMESTER 1992**

January 13 - May 10

Office of the Director  
215-951-1285

**REGULAR HOURS**

Mon - Thurs	8:00 am - 12:00 m
Friday	8:00 am - 8:00 pm
Saturday	10:00 am - 6:00 pm
Sunday	12:00 n - 12:00 m

**MARTIN LUTHER KING HOLIDAY**

Monday	January 20	8:00 am - 12:00 m
--------	------------	-------------------

**MIDSEMESTER EXAMS AND HOLIDAY**

Sunday	February 23	12:00 n - 1:00 am
Mon - Thurs	Feb 24 - 27	8:00 am - 1:00 am
Friday	February 28	8:00 am - 5:00 pm
Saturday	February 29	10:00 am - 6:00 pm
Sunday	March 1	<b>CLOSED</b>
Monday (holiday)	March 2	3:00 pm - 10:00 pm
Tues - Thurs	March 3 - 5	8:00 am - 9:00 pm
Friday	March 6	8:00 am - 8:00 pm
Saturday	March 7	10:00 am - 6:00 pm
Sunday	March 8	12:00 n - 12:00 m

**EASTER HOLIDAYS**

Thursday	April 16	8:00 am - 12:00 m
Friday	April 17	<b>CLOSED</b>
Saturday	April 18	10:00 am - 6:00 pm
Sunday	April 19	<b>CLOSED</b>

**FINAL EXAMS**

Mon - Thurs	April 20 - 23	8:00 am - 1:00 am
Friday	April 24	8:00 am - 8:00 pm
Saturday	April 25	10:00 am - 6:00 pm
Sunday	April 26	12:00 n - 1:00 am
Mon - Thurs	April 27 - 30	8:00 am - 1:00 am
Friday	May 1	8:00 am - 8:00 pm
Saturday	May 2	10:00 am - 6:00 pm
Sunday	May 3	<b>CLOSED</b>
Mon - Thurs	May 4 - 7	8:00 am - 8:00 pm
Friday	May 8	8:00 am - 5:00 pm
Saturday	May 9	10:00 am - 6:00 pm
Sunday	May 10	<b>CLOSED</b>





**La Salle University**  
Philadelphia, Pennsylvania 19141

**Food Services Department**

To: Campus Community  
 From: Stephen C. Greb  
 Director of Food Service  
 Date: December 16, 1992  
 RE: **Martin Luther King, Jr Holiday**

The operational schedule for the Food Service Department for the upcoming Holiday is as follows;

**Martin Luther King Holiday**  
**Monday, January 20, 1992**

North Dining..... Normal Hours of Operation  
 Food Court..... CLOSED  
 Intermissions ..... Breakfast 7:30am-11:00am  
 Lunch 11:00am- 2:30pm  
 Faculty Dining Room .. CLOSED



**SPORTS**  
**INFORMATION**

**Michael Felici**  
Director  
215/951-1605  
**Dawn Wright**  
Assistant Director  
**Robert Vetrone, Sr.**  
Assistant Director

La Salle University • Athletic Department • 1900 West Olney Avenue • P.O. Box 805 • Philadelphia, PA 19141

**LA SALLE UNIVERSITY**  
**INTERCOLLEGIATE ATHLETICS**  
**WINTER SCHEDULE**

**FOR BASKETBALL TICKET INFORMATION**  
**CALL 951-1545**

<b>Date</b>	<b>Sport</b>	<b>Opponent</b>	<b>Location</b>	<b>Time</b>
1/22	W.Basketball	Iona	Hayman Hall	7:00 pm
1/25	M.Basketball	Canisius	Civic Center	7:30 pm